

Häfele Slido F-Park71 16A

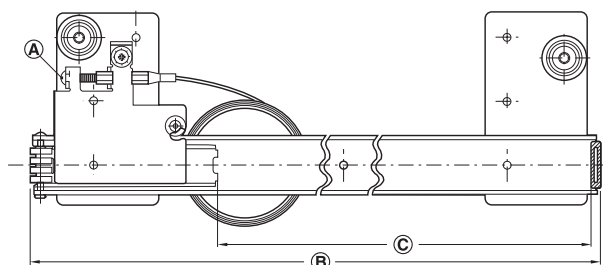


- > Door height: ≤1,500 mm
- > Door thickness: 16–32 mm with Infront, 19–22 mm with Vorfront
- > Push-in depth: Max. 230–550 mm
- > Material: Runner and cord: Steel, runner roller: Plastic
- > Finish/colour: Guide: Black galvanized, Cable: Black plastic coated, Guide roller: White
- > Installation: For screw fixing into 32 mm series drilled holes

Order reference

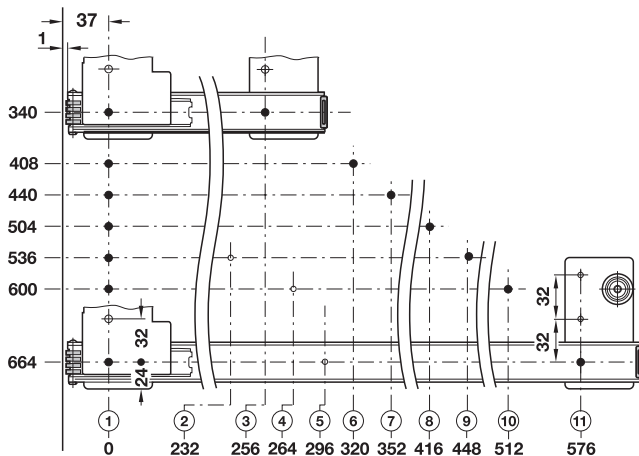
Please order door fixing set separately.

Cable tension adjustment



- Ⓐ Cable tension adjusting screw
- Ⓑ Runner length
- Ⓒ Push-in depth

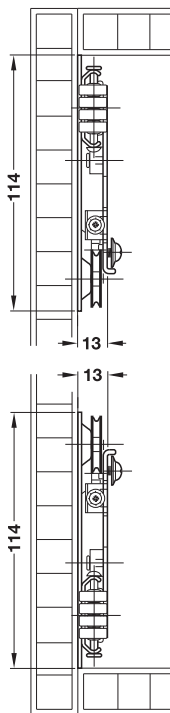
Guide installation



Application



Guide installation



Mount guides directly on the outer side

→ Set

	Supplied with	Runner length mm	Push-in depth mm	Cat. No.
For 1 door	1 Pair of runners 2 Cables with adjusting screw	340	Max. 230	408.25.335
		408	Max. 294	408.25.340
		440	Max. 326	408.25.345
		504	Max. 390	408.25.350
		536	Max. 422	408.25.355
		600	Max. 486	408.25.360
		664	Max. 550	408.25.365

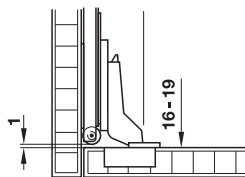
Packing: 1 set



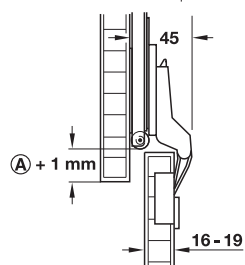
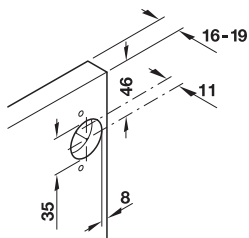
→ Door fixing set

- > Installation: For screw fixing
- > Mounting door to cabinet without tools (clip system)

For inset mounting (Infront), door thickness 16–19 mm



Drilling pattern for cup fixing



Ⓐ Door thickness

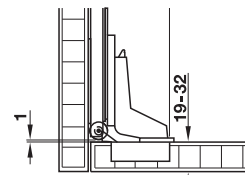
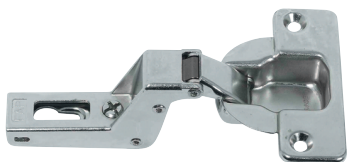
Supplied with

- 2 concealed hinges, opening angle 95°, crank 8 mm
- 4 fixing screws for concealed hinges, 5 x 15 mm
- 2 cruciform mounting plates
- 4 fixing screws for cruciform mounting plates, M4 x 5 mm
- 2 door stoppers
- 2 fixing screws for door stoppers, 3.5 x 25 mm
- 10 fixing screws for guide, 4.0 x 12 mm

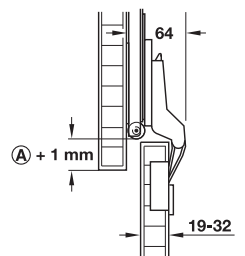
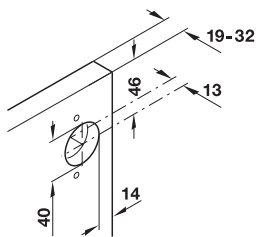
	Cat. No.
For 1 door	408.24.020

Packing: 1 set

For inset mounting (Infront), door thickness 19–32 mm



Drilling pattern for cup fixing



Ⓐ Door thickness

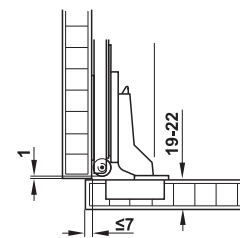
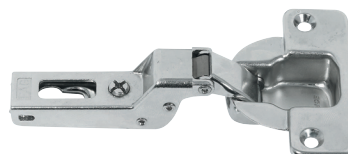
Supplied with

- 2 concealed hinges, opening angle 95°, crank 16 mm
- 4 fixing screws for concealed hinges, 3.5 x 15 mm
- 2 cruciform mounting plates
- 4 fixing screws for cruciform mounting plates, M4 x 5 mm
- 2 door stoppers
- 2 fixing screws for door stoppers, 3.5 x 25 mm
- 10 fixing screws for guide, 4.0 x 12 mm

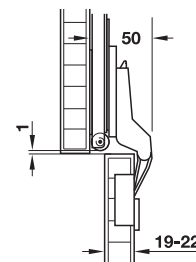
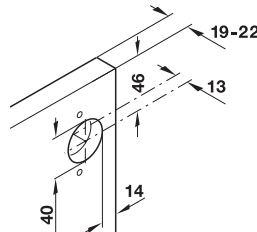
	Cat. No.
For 1 door	408.24.002

Packing: 1 set

For full overlay mounting (Vorfront), door thickness 19–22 mm



Drilling pattern for cup fixing



Supplied with

- 2 concealed hinges, opening angle 95°, crank 8 mm
- 4 fixing screws for concealed hinges, Ø 3.5 x 15 mm
- 2 cruciform mounting plates
- 4 fixing screws for cruciform mounting plates, M4 x 5 mm
- 2 door stoppers
- 2 fixing screws for door stoppers, Ø 3.5 x 25 mm
- 10 fixing screws for guide, Ø 4.0 x 12 mm

	Cat. No.
For 1 door	408.24.011

Packing: 1 set

DGH-M 2021, HDE-en, 11/20; Dimensional data not binding. We reserve the right to alter specifications without notice.

→ HM-tipped multi-spur drill bit

- > Diameter: 40 mm
- > Shank Ø: 10 mm

	Cat. No.
HM-tipped multi-spur drill bit	001.06.640

Packing: 1 piece