





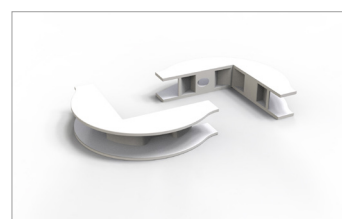
FLEXYLED AT6

with double power cable

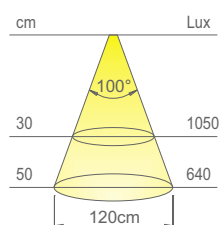
Code	Length	Watt	Volt
1510401N/200	2000mm	20W	24Vdc
1510401N/300	3000mm	30W	24Vdc
1510401N/600	6000mm	60W	24Vdc
1510401B1/200	2000mm	20W	24Vdc
1510401B1/300	3000mm	30W	24Vdc
1510401B1/600	6000mm	60W	24Vdc



FLEXYLED AT6 is supplied with a 3M® high-strength adhesive base and with hooks and screws for mechanical fastening to the surface.



An angle profile for the application of FLEXYLED AT6 on surfaces with 90° angles is available on request.



values referring to FLEXYLED AT6 D-M 1000mm

Colour appearance	super warm white	natural white
Colour temperature	2700K	4000K
Luminous flux	820 lm/m	920 lm/m
Luminous efficiency	82 lm/W	92 lm/W
CRI	Ra 90	Ra 90

FLEXYLED AT6

flexible LED profile



FLEXYLED AT6 is a dimmable single-colour light profile developed with silicone coating technology for diffusing a milky effect on a 6 mm wide flexible linear module with 276 LEDs/m. Designed for surface and recessed installation, the profile can also be configured for installation on the corners of furniture elements. Supplied as standard with a high-strength adhesive base, separable every 21.7 mm (6 LEDs), FLEXYLED AT6 is available in 2000 mm, 3000 mm and 6000 mm reel lengths with double 2000 mm power cable and Micro24 male connector. Power supply not included. To be ordered separately.



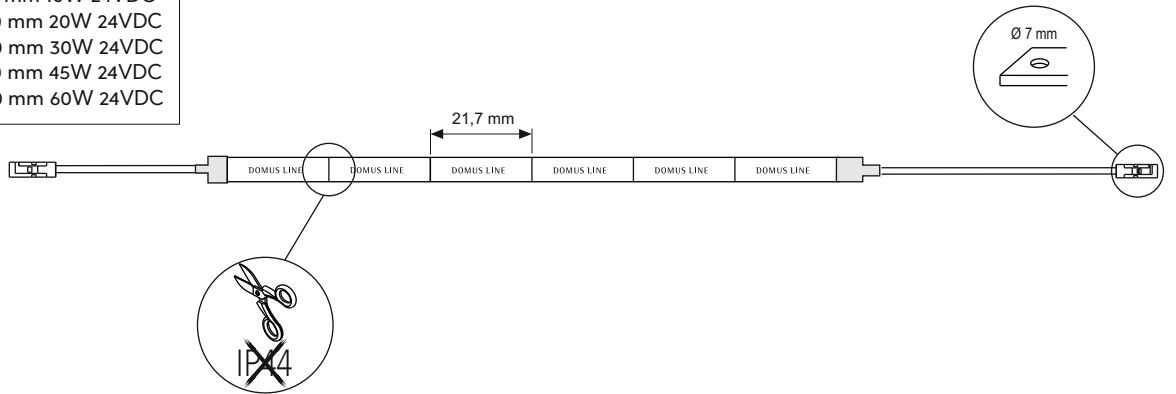
white



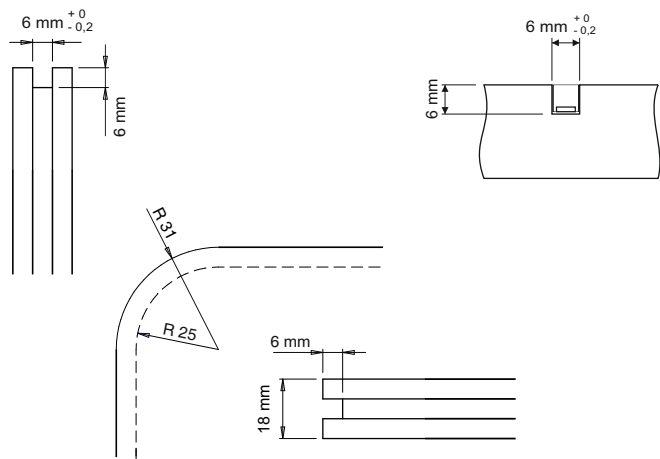
FLEXYLED AT6



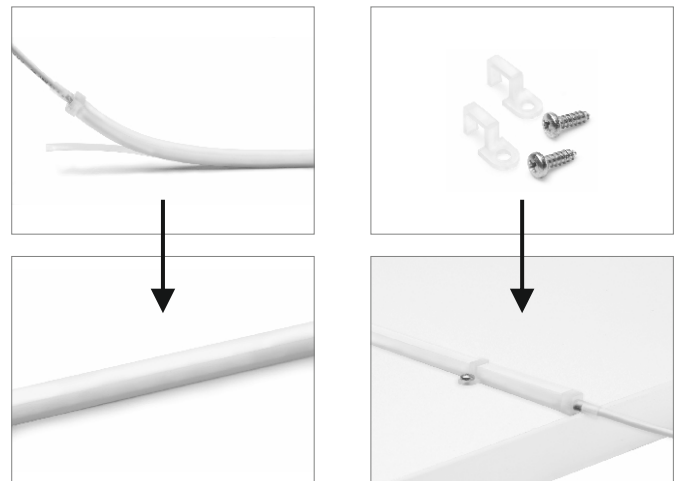
FLEXYLED AT6 L. 1000 mm 10W 24VDC
FLEXYLED AT6 L. 2000 mm 20W 24VDC
FLEXYLED AT6 L. 3000 mm 30W 24VDC
FLEXYLED AT6 L. 4500 mm 45W 24VDC
FLEXYLED AT6 L. 6000 mm 60W 24VDC



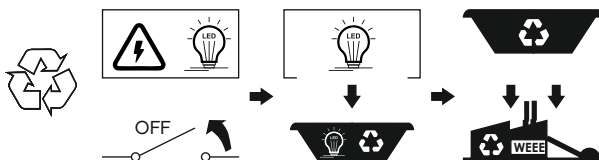
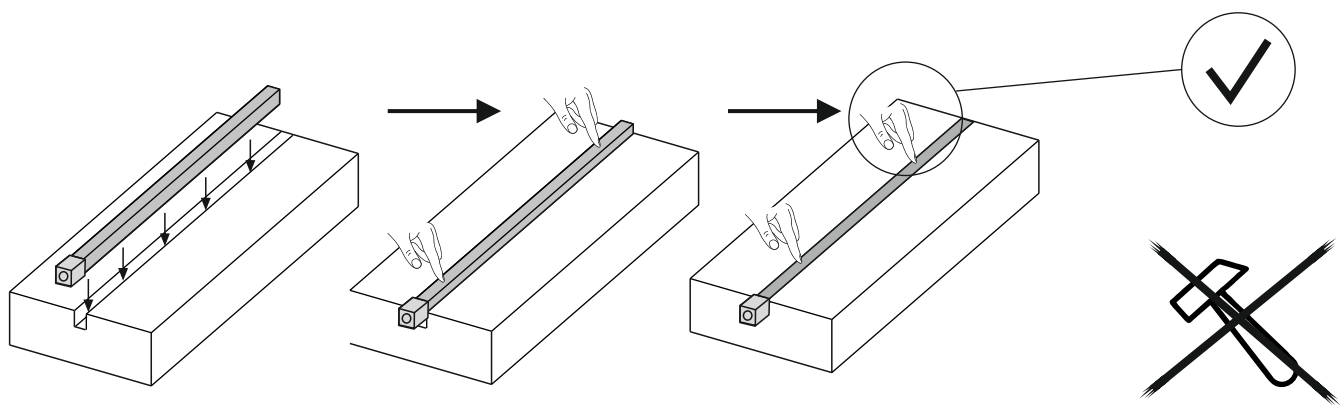
FLEXYLED AT6



FLEXYLED AT6

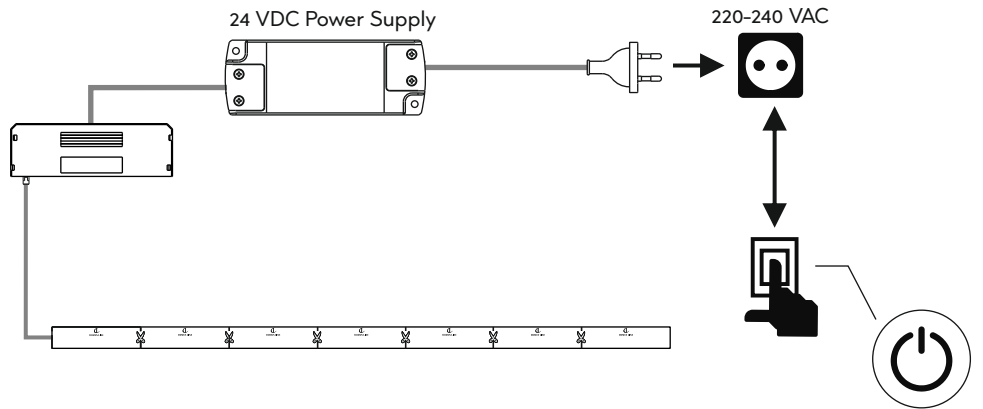


FLEXYLED AT6





FLEXYLED AT6



FLEXYLED AT6

