



NEBULA

Domus Line
design

Frame for the bottom of the cabinet

Materials:

aluminium, glass

Finishes:

aluminium

Light source:

HE LED module (120 LED/m)

Wiring:

4000mm

Application type:

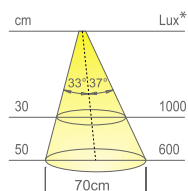
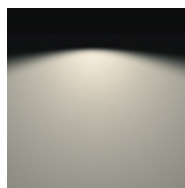
kitchen cabinet

Installation:

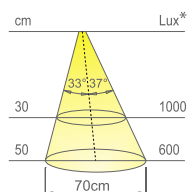
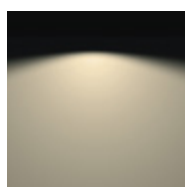
to integrate into the body
of kitchen cabinet

Patented

NEBULA is an innovative lighting frame for the bottom of the cabinet. Developed around a **single extra-clear glass 8mm thick**, which reduces the burden on the body of the cabinet, it can **accommodate up to 4 linear HE LED** high light emission modules. Two of them for the radial lighting of the glass shelf and two for the asymmetric and crossed lighting of the kitchen top.



Colour appearance	natural white
Colour temperature	4200 K
Luminous efficiency	85 lm/W
CRI	Ra ≥ 80



Colour appearance	warm white
Colour temperature	3100 K
Luminous efficiency	85 lm/W
CRI	Ra ≥ 80

* values referring to NEBULA HE 1200mm



NEBULA HE TLD
with touch dimmer switch



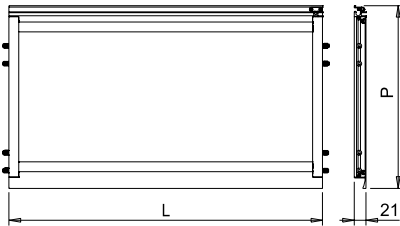
Code	Model	Watt & Volt	Light colour	Finish
on request*	HE (120 LED/m)	9,6W/m @ 24Vdc	natural white	aluminium
on request*	HE (120 LED/m)	9,6W/m @ 24Vdc	warm white	aluminium

LED CONVERTER NOT INCLUDED. TO BE ORDERED SEPARATELY.

* Codes will be provided according to measurement requested.



For power supplies and accessories see page 46 or browse the Domus Extra catalogue.



NEBULA fits perfectly on the kitchen cabinets, with sides **18mm** and **19mm** thick, thanks to the lateral pins. The configuration of the pins - quantity and position - can be customized thanks to the sliding guide that holds them.



The two lower lighting profiles of **NEBULA** can integrate a **dimmer touch switch** which, when touched, switches on, switches off and adjusts the luminous intensity of the luminaire.



The particular structure of the frame designed like a "sandwich" allows a **complete and easy access to the lighting profiles** for maintenance or the replacement of the glass, if necessary.



The front profile of **NEBULA** is designed with a "groove" to facilitate the door opening.



The groove for inserting the **back of the cabinet** can accommodate **3mm, 4mm and 5mm** panels. Configurations for different thicknesses are available on request.

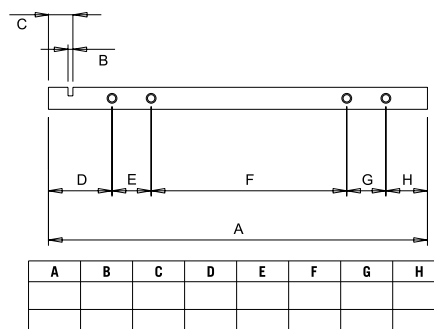


NEBULA is equipped as standard with a **rear groove** integrated in the profile that allows to hook the under-cabinet accessories directly on the frame of the cabinet instead of on the wall.



The 4000mm **NEBULA** power cable, complete with a polarized connector, comes out from the part back and is secured to the frame with a special cable clamp.

NEBULA is supplied custom made with specific dimensional configurations. Also the quantity and positioning of the lateral pins can be customised. The back groove can be configured in compliance with the thickness of the back and its distance from the wall. Filling out the form and you will receive a confirmation of the production feasibility with the relative commercial offer.



¹ For UL-certified model codes, see the **American standard LED collection catalogue**, also available at www.domusline.com



DOWNLOAD THE FORM

